

Cybersecurity Awareness Training

Offered by Cowbell Cyber through Wizer

The first and arguably most important step to protecting your business is to educate your employees about cybersecurity.

Why?

- Many cyberattacks, especially ransomware, succeed by taking advantage of human errors.
- Skilled cybercriminals can easily fake emails from clients, managers, or suppliers.
- It is easy to inadvertently fall victim to a phishing email when under stress.
- Resulting cyber incidents can lead to business interruption, ransom, compromised data and more.



What can you do?

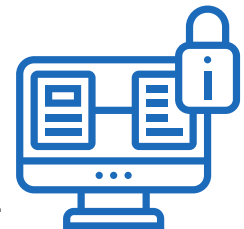
Enroll your employees into cybersecurity awareness training. It is included with every Cowbell's cyber insurance policy. Cowbell has partnered with Wizer to deliver the following:

- 1-2 min training videos
- Quizzes and progress reports
- Phishing email simulations



Cybersecurity awareness basics:

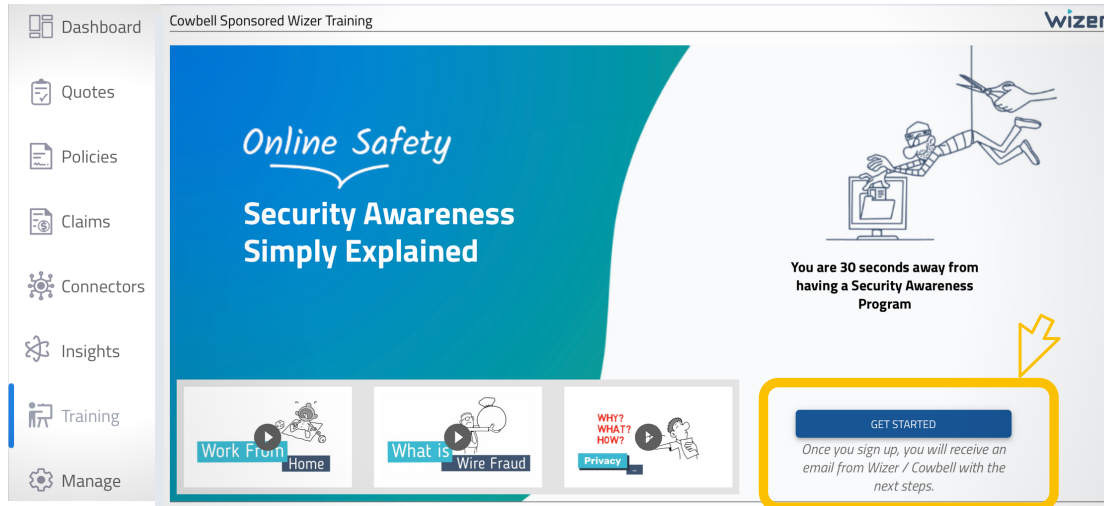
- Enforce the use of strong passwords; avoid password reuse.
- Deploy multi-factor authentication (MFA or 2FA).
- Avoid poorly secured public Wifi.
- Install security software on all devices.
- Train employees to access sensitive data only from company devices and through a VPN (encrypted) connection.



For more information, download Wizer's document on [how to build a cybersecurity awareness program](#).

How To Activate Your Training Program

- ① Log into Cowbell at console.cowbellcyber.ai
- ② Click on the "Training" tab on the left menu
- ③ Click on "Get Started"



- ④ Check your Email for an email invitation with the following title:
"Cowbell Cyber invited you to join a Security Awareness Program!"

This email will include a link to join the Wizer portal and configure the Cybersecurity training program.

Note: the training program is entirely free for up to 20 team members with Cowbell discounted pricing beyond that. This includes:

- Access to 100+ microlearning videos
- Smart phishing simulator and phishing game
- Policy Management, SSO, and more...

Cyber Insurance Made Easy™

Cowbell Cyber delivers standalone, individualized and state-admitted cyber insurance to small and mid-sized enterprises. Cowbell's cyber policies include risk insights and assessment, breach coaches, cybersecurity awareness training, and more.